



# GAT MONTHLY MEMBERSHIP PROGRESS REPORT

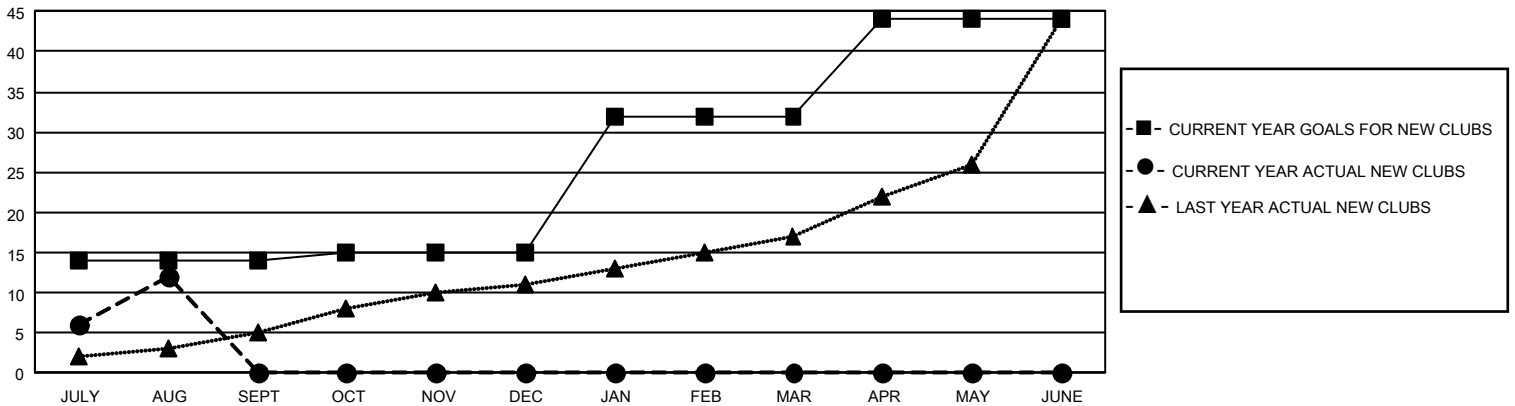
Results as of: 8/31/2025

## GMT Constitutional Area 3, Group C

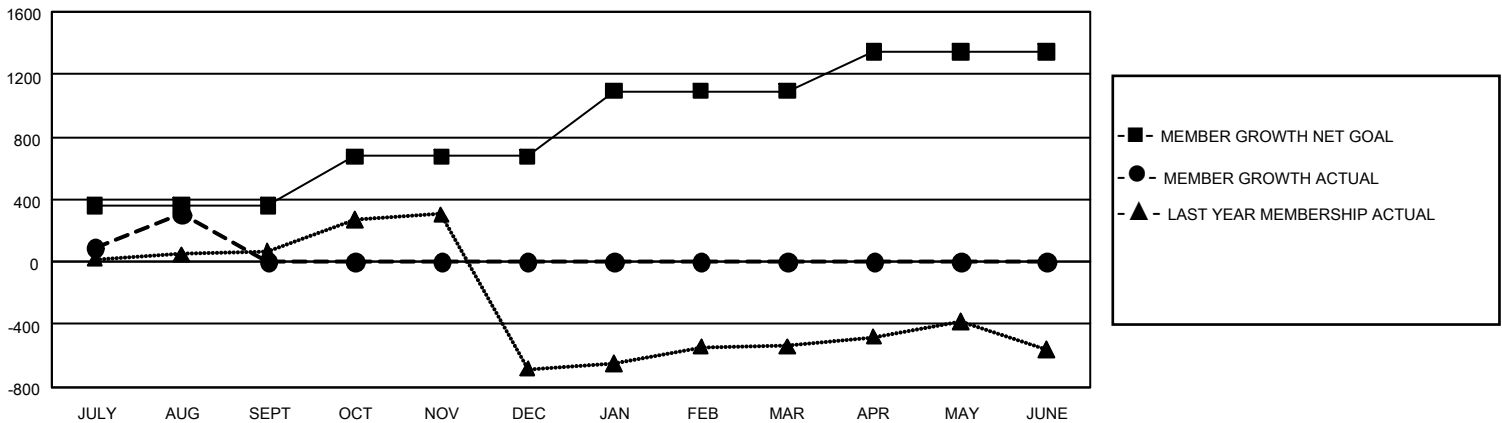
REPORT DOES NOT INCLUDE CLUBS IN UNDISTRICTED AREAS.

Clubs				Members			
RESULTS FOR 2025-2026				RESULTS FOR 2025-2026			
QUARTER	NEW CLUB GOAL	NEW CLUBS	DROPPED CLUBS	QUARTER	MEMBER GROWTH NET GOAL	MEMBER GROWTH ACTUAL	DROPPED MEMBERS ACTUAL (including transfers)
JULY/AUG/SEPT	42	12	4	JULY/AUG/SEPT	361	698	304
OCT/NOV/DEC	3	0	0	OCT/NOV/DEC	315	0	0
JAN/FEB/MAR	51	0	0	JAN/FEB/MAR	416	0	0
APR/MAY/JUNE	36	0	0	APR/MAY/JUNE	252	0	0

GOALS AND ACTUAL NEW CLUBS CUMULATIVE



GOALS AND ACTUAL MEMBERS CUMULATIVE



DROPPED CLUBS: 4

148 CLUBS OF 792 ADDED 1 OR MORE NEW MEMBERS

### GENDER DISTRIBUTION

MALE	7,856 (48.02%)
FEMALE	8,490 (51.90%)
NON BINARY	1 (0.01%)
PREFER NOT TO ANSWER	12 (0.07%)

### DROPPED MEMBERS

DECEASED	22
CLUB CANCELLED	59
OTHER	220
<b>TOTAL</b>	<b>301</b>

[CLICK HERE FOR CUMULATIVE MEMBERSHIP DATA](#)

TOTAL FAMILY UNIT MEMBERS	5,843
FAMILY MEMBERS PAYING HALF DUES	3,468